

you can  
**Canon**

High Performance Laser Faxes  
**FAX-L2000 / FAX-L2000IP**

*Experience the ultimate  
in faxing efficiency*





## *From high speed multi-tasking to internet faxing*

Enhance efficiency, save time and cut costs with the most complete laser fax for dynamic corporate environments. High speed performance for heavy-duty faxing - as well as fast network printing and convenient copying - provides unparalleled productivity. All combined with high quality sending, simplicity and total security for sensitive documents.

The FAX-L2000 is the ideal choice for medium size companies and departments with a demanding workload. While the unique Canon FAX-L2000IP opens new horizons for highly effective faxing. Fully utilising your organization's internet platform, it features intelligent send, receive and forward functions to speed up and simplify overall document management.



## FAX-L2000: heavy-duty performance

### ENHANCED PRODUCTIVITY

The durable design of the FAX-L2000 makes it ideal for rapid and reliable high-volume faxing. The large standard paper capacity of 600 pages reduces the need for constant paper refilling.

A huge standard memory of 512 pages\* stores both your incoming and outgoing faxes.

Other time-saving features include dual access - allowing you to carry out different functions simultaneously - and a 50-page Automatic Document Feeder.

\* Based on ITI-T standard chart NO.1.

### CUTTING PHONE AND LABOUR COSTS

Keep your company phone and labour costs down to an absolute minimum, thanks to ultra fast Super G3 transmission. A fallback capability allows full reception of multiple faxes without blocking the line. Up to 200 fax numbers can be stored in memory (72 one touch/128 coded) for faster dialling. Scanning speed is a rapid 1.1 seconds per page (A4). Plus an 18 pages per minute printing speed delivers your faxes instantly.



**SUPER  
G3**



### SUPERIOR IMAGE QUALITY

Whether you're faxing fine text, diagrams or even photographs, you can always rely on Canon's exclusive UHQ (Ultra High Quality) technology for superior sending. Ensuring extra depth and clarity for all your detailed work. A high print resolution of 1200 x 1200 dpi offers equally high quality for all incoming faxes.

### COMPLETE CONFIDENTIALITY

Up to 50 confidential mailboxes are available - offering users total security for all sensitive documents. Documents can then be received in memory and are only printed out when a password is provided. A forced reception feature ensures that all documents stay in memory and are only printed out on request. While direct mail prevention eliminates unwanted faxes.



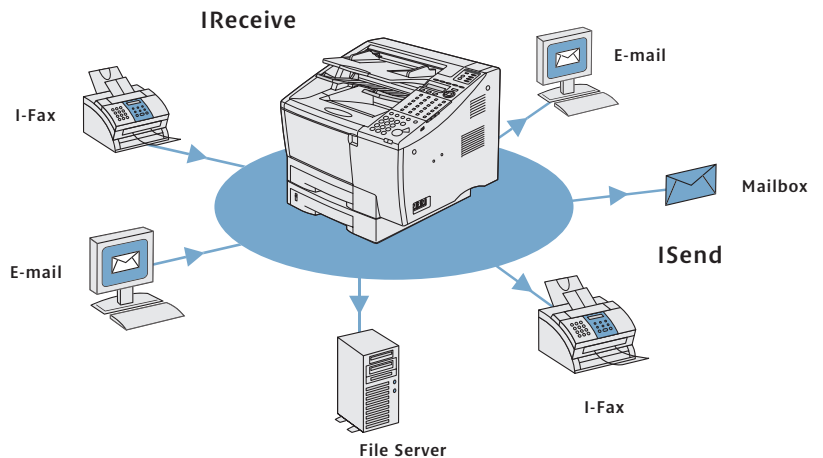
## FAX-L2000IP: intelligent internet faxing

### COST-EFFECTIVE INTERNET FAXING

With the FAX-L2000IP, you can send all your international faxes via your existing internet connection to compatible i-fax devices at reduced rates. And you benefit from all the productive features of the FAX-L2000 with the added advantage of unique send, receive and forward functions to transform your entire office workflow.

### AN INTELLIGENT WORKFLOW

Paper documents can be scanned into your system for direct distribution to i-fax and email addresses. Faxes can also be sent to a file server for storage. Plus you can route all incoming faxes automatically - allowing them to be shared and worked on by authorised users on the network. Acting as a central communication hub, the FAX-L2000IP lets you collect, share, manage and store all your office documents digitally.

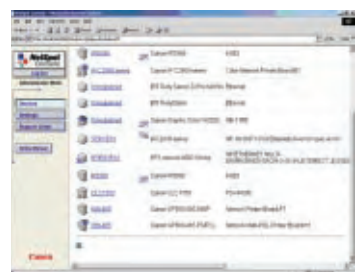


### POWERFUL NETWORK PRINTING

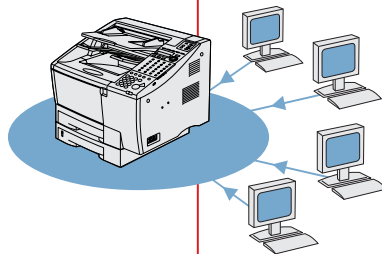
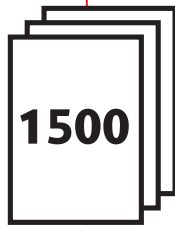
As the FAX-L2000IP features standard network connectivity, the unit can also be used as a fast, flexible and high quality printer for every PC on your network. Speed is a rapid 18 pages per minute, with a razor-sharp print resolution of 1200 x 600 dpi. Thus it's ideal for use as a back-up printer - or it can even serve as the main printer for departments and workgroups.

### MANAGE IT ALL EASILY

A Remote User Interface (RUI) allows direct desktop control from connected PCs. Users can issue print commands, check on status and carry out a wide range of functions, via the built-in web browser function. Plus handy network management tools let administrators maintain and monitor use remotely - complete with full accountability so costs can be reduced.



## Upgrade as your business expands



### HIGH VOLUME PAPER CAPACITY

An optional 500-sheet paper cassette for both the FAX-L2000 and FAX-L2000IP takes the total paper supply up to 1100 sheets. Simply add it on whenever you want - to meet the most demanding needs for high volume faxing and printing in the future.

### BENEFIT FROM MORE MEMORY

With both faxes, you can also boost the standard 8MB memory right up to 32MB. This offers a massive 1500-page storage memory for high volume faxing - without any risk of missing a fax even if paper runs out. Also an optional handset can be added to either model for full phone/fax use.

### NETWORK PRINTING (FAX-L2000)

Add on an optional network and printer board and transform the FAX-L2000 into a powerful and productive network printer. It adds to overall efficiency, saves space and saves you the cost of having to buy an extra printer as and when the need arises.

### INTERNET FAXING (FAX-L2000)

If internet faxing is a feature that might interest you in the future, no problem. The FAX-L2000 can be easily upgraded to an internet fax at any time - thus offering your organization all the intelligent, time-saving workflow functions of the FAX-L2000IP.

## FAX-L2000/FAX-L2000IP Specifications

<b>FAX unit type</b>		
Type	FAX-L2000 Standalone facsimile with optional upgrades FAX-L2000IP Facsimile with network printing and internet faxing capabilities	
Compatibility	Group 3	
Applicable line	PSTN	
Modem speed	33.6K bps ( Super G3 )	
Print technology	Laser beam printing	
Scanner type	Sheet fed	
Body colour	Cool White	
<b>FAX scanning features</b>		
Automatic document feeder	50 sheets	
Scanning speed	Approx. 1.1 sec/page	
Fax resolution	Ultra fine: 16 pels x 15.4 lines / mm Super fine: 8 pels x 15.4 lines / mm Fine: 8 pels x 7.7 lines / mm Standard: 8 pels x 3.85 lines / mm	
Image processing system	UHQ (Ultra High Quality)	
Halftone	256 shades of greyscale	
<b>FAX printing features</b>		
Printing method	Laser Beam Printing	
Print speed	18 pages per minutes	
Print resolution	1200 X 1200 dpi	
Paper input capacity	2 x 250 sheets paper cassette Optional cassette 500 sheets paper cassette Multi Purpose Tray 100 sheet auto sheet feeder	
Print cartridge	FX-7	
Yield	4500 pages (based on Canon Fax Standard Chart No. 1.)	
Others	Smoothing	
<b>Transmission and reception features</b>		
Transmission speed	3 seconds per page with 33.6K bps modem (based on ITU-T Standard Chart No.1.)	
Compression method	MH, MR, MMR, JBIG	
FAX memory	512 pages (8MB) based on ITU-T Standard Chart No. 1. Memory backup Yes, approx. 12 hours Optional memory 32MB (1500 pages) based on ITU-T Standard Chart No. 1.	
Others	Dual access, Error correction mode (ECM), Fax transfer, Fax retrieval (Bulletin board)	
<b>Security and Management features</b>		
Confidential transmission	Yes (By sub address or password)	
Confidential mail box	Yes (By sub address or password - 50 boxes)	
Others	Verification stamp	
<b>Telephony features</b>		
One touch dials	72 locations	
Coded dials	128 locations	
Group dials	Max. 199 locations	
Telephone handset	Option	
Others	Program dial	
<b>Copy features</b>		
Copy resolution	Scan: 600 x 600 dpi Print: 1200 x 1200 dpi	
Copy speed (Mono)	18 copies per minutes	
Multiple copy	Up to 99 copies	
<b>Other features</b>		
Display	Type	LCD
	Size	20 x 2
Internet FAX function (LAN Type)	FAX-L2000	Optional
	FAX-L2000IP	Yes

<b>General features</b>		
Dimensions	(No handset or optional cassette) 499(W) x 498.7(D) x 458.9(H) mm	
Dimensions	(With handset and optional cassette) 569(W) x 498.7(D) x 595.4(H) mm	
Installation space	(With handset and optional cassette) 569(W) x 1065.3(D) x 644.6(H) mm	
Weight	Approx. 24 Kg (without handset or optional cassette)	
Power	Source	AC 200-240V 50-60Hz
	Consumption	Approx. 15W (standby); Approx. 980W (Max) Reception: approx. 270W; Transmission: approx. 18W Copy: approx. 435W
Acoustic Noise Levels	Standby: under 35dB(A); Copy: under 56dB(A) Printing: under 54dB(A); Transmission: under 55dB(A)	
<b>Options</b>		
Items	500 Sheet Paper Cassette Printer Interface Board (optional for FAX-L2000) Network Interface Board (optional for FAX-L2000) 32MB Memory (For Printer and Fax) 64MB Memory (Printer only) Handset (Telephone 6 - Cool white )	
<b>Printer Features</b>		
Printer function	FAX-L2000 FAX-L2000IP	Optional Yes
Printer Type	Mono Laser	
Print Speed	18 pages per minute	
Interface	IEEE1284 (Parallel), USB	
PDL	PCL5e, PCL6	
Memory	Standard RAM	8MB
	Option RAM	32MB/64MB
	Option ROM	8MB Flash ROM DIMM
Print Resolution	1200 x 600 dpi	
Supplied Drivers	Printer	Windows 95, NT4.0, 98, Me, 2000, XP
	Fax	Windows 95, NT4.0, 98, Me, 2000, XP
Others	Toner Save	
<b>Network Features</b>		
Network connectivity	FAX-L2000 FAX-L2000IP	Optional Yes
Type	Ethernet (10BaseT/100BaseT)	
Connection Type	RJ45	
Network Protocols	TCP/IP, IPX/SPX	
Others	Remote User Interface, Email notification upon job completion, Dynamic Configuration, Scan to FTP	
<b>Internet Fax features</b>		
Internet Fax	FAX-L2000 FAX-L2000IP	Optional Yes
Protocol	T.37 Simple Mode	
Transmission	Internet FAX (Simple Mode) File Format TIFF (MH) Email Mode File Format TIFF (MH/MR/MMR), PDF (MH) Internet FAX (Simple Mode) File Format TIFF (MH) Receiving Method POP3 (Manual RX available), SMTP	
Reception		

™ All company and/or product names are trademarks and/or registered trademarks of their respective manufacturers in their markets and/or countries.  
Canon reserves the right to change specifications without notice.



you can  
**Canon**

**Canon Inc.**  
30-2, Shimomaruko 3-Chome, Ohta-ku,  
Tokyo 146-8501, Japan  
www.canon.com

Europe, Africa and Middle East  
**Canon Europa N.V.**  
P.O. Box 2262, 1180 EG Amstelveen,  
the Netherlands  
www.canon-europe.com



© Canon Europa N.V., 2003 (0203)



Canon's new FX-7 cartridge included

**Canon (UK) Ltd**  
Woodhatch  
Reigate  
Surrey  
RH2 8BF  
Tel 08705 143723  
Fax 08705 143340

[www.canon.co.uk](http://www.canon.co.uk)