

you can
Canon

TOP
OFFICE
.com
0800 808 7788

iR400

high capacity
digital system

Producing
documents to even
tighter deadlines



Superior quality. Improved productivity. Increased time saving efficiency. That, quite simply, is the difference that the digital iR400 makes to your workload. Built-in reliability ensures a constant turnover that delivers a truly competitive edge. All with smooth upgrading to a network printer, fax and scanner, whenever you want.

BENEFIT YOUR
BUSINESS

- Ideal for departmental printing and copying
- Rapid 40 copies per minute
- High copy quality (1,200 x 600 dpi)
- 'Scan once, print many'
- Limitless duplexing without speed loss
- High print queue performance
- Memory sorting features



Outstanding productivity and performance

Digital technology has taken document printing and copying into a new dimension and the Canon iR400 allows you to enjoy its full potential. This versatile network imaging device combines creative document finishing facilities with a superb range of options for document finishing, network printing, scanning and faxing. All of which accommodate your needs today and can adapt as your business needs change.

The iR400 integrates unsurpassed levels of performance and multi-function capability whether connected to the network or serving stand-alone environments. So whether your document management needs call for printing, copying, faxing or scanning, you can be rest assured the iR400 can be precisely configured to match your needs.



With Canon's high-definition digital output, copies always come out sharper and clearer - without any drop in image quality. Complex charts and fine details are captured perfectly, thanks to an ultra-high, interpolated resolution.

EXCEPTIONAL
QUALITY

The 'scan once, print many' ability saves precious time. Originals are scanned rapidly, so they can be removed while the copying process is completing. Print queue performance is also high so you don't have to spend time waiting at the machine.

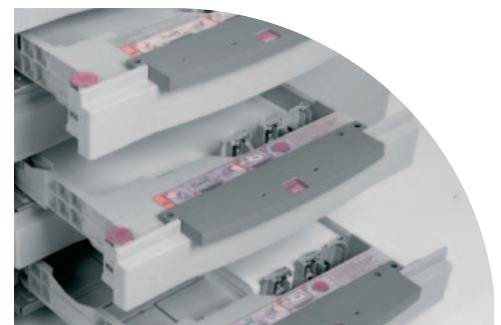
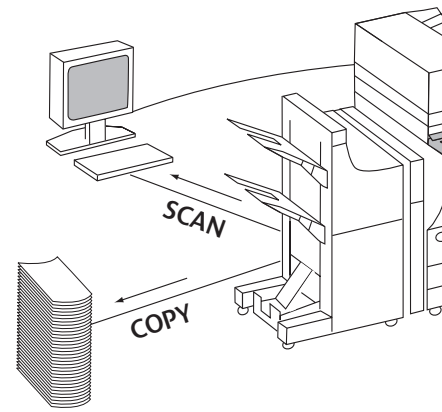
LESS WAITING

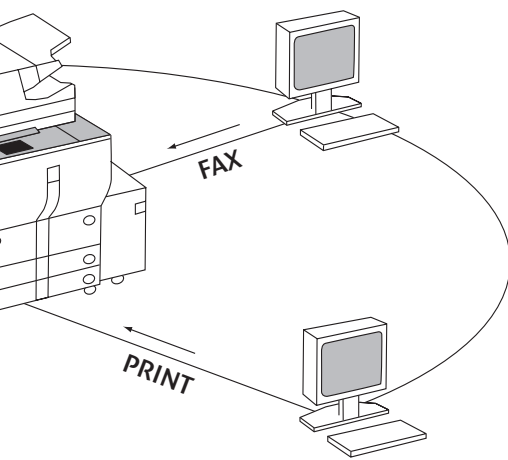
Standard duplexing is carried out continuously, at a rapid 40 copies per minute, which allows you to produce a large volume of two-sided copies without any drop in engine speed. This new duplexing technology ensures virtually limitless two-sided copying.

HIGH SPEED

There are no more paper replenishment problems, with a total feed capacity of 5,550 sheets. Two 500-sheet cassettes and a 50-sheet tray are standard. Then you can add optional drawer pedestals and a paper deck, to make full use of the iR400's flexible copying and finishing abilities.

MORE PAPER



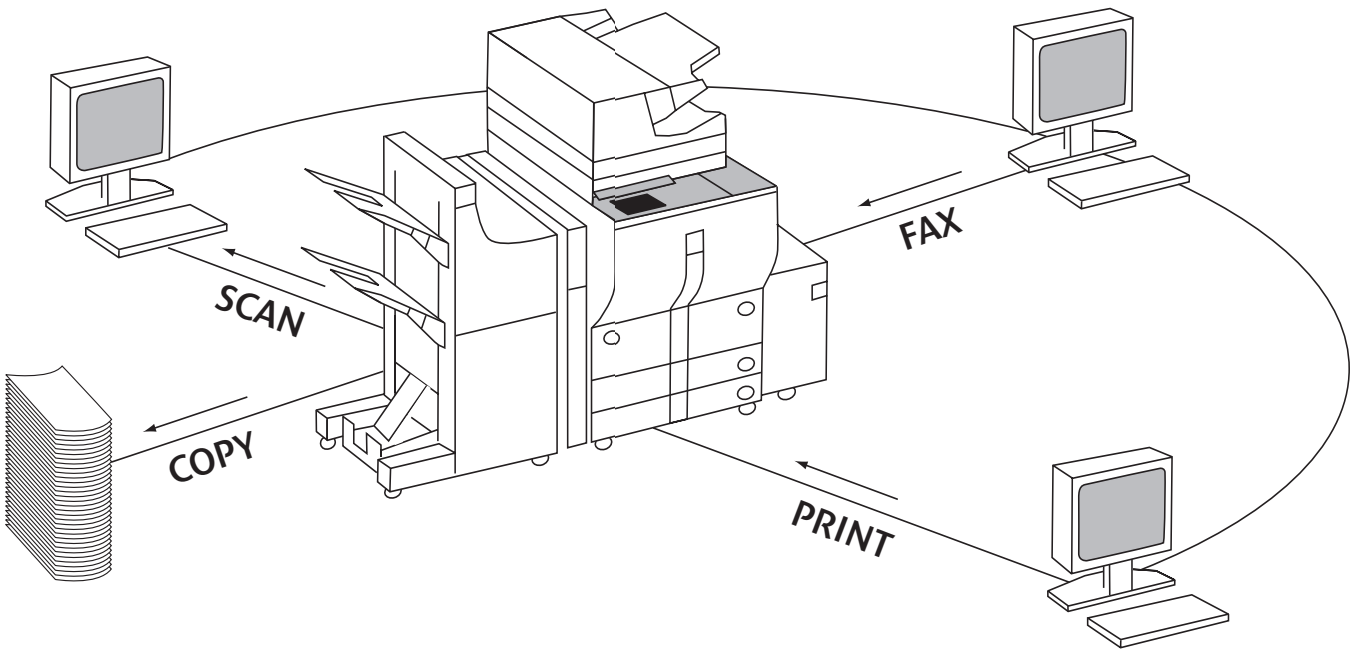


MEMORY SORTING The iR400 can automatically sort copies directly on the document output tray. And to ensure optimum copying results, regardless of the orientation of the document, automatic portrait/landscape rotation is also featured, thus eliminating any unnecessary copying errors.

SORTING AND STAPLING High capacity finishing for all paper sizes is simple with Canon's special, optional Finisher. When combined with the memory feature, it allows productive output for continuous sorting as well as multi-position stapling.

PROFESSIONAL BOOKLETS Produce booklets while cutting paper costs considerably with Canon's state-of-the-art optional Saddle Finisher (C2). Fine saddle stitching and document folding lets you prepare a wide range of materials for all your business needs.

UPGRADE EFFORTLESSLY Thanks to its advanced digital technology, the iR400 allows smooth, easy upgrading whenever you want. You can expand your productivity to the limit by adding on rapid network printing, high quality faxing and even scanning.



Type: digital multi-function imaging system
Imaging System: laser dry electrostatic transfer
Image Memory: 32MB (upgradeable to 96MB)
FCOT: 6 seconds
Warm-up Time: 92 seconds or less
Copy Speed: 40ppm
Resolution: 600 dpi x 600 dpi, interpolated to 1200 dpi x 600 dpi
Halftone: 256 gradations of grey
Scanner: CCD, 600 dpi resolution
Feeding: automatic document feeder
Feeder Capacity: 50 sheets (DADF-A1), 30 sheets (DADF-B1)
Max. Original Size: A3
Output Sizes: cassette: A5 - A3, bypass: A6 - A3
Paper Supply: standard: dual front-loading cassettes - 500 sheets each, 50-sheet stack bypass; optional: 1,000-sheet two-cassette feeder, 2,000-sheet four-cassette feeder, 3,500-sheet paper deck, (total: 5,550 Sheets)
Output Options: stapler stacker finisher, multi-position auto stapler, saddle-stitch finisher
Duplexing: automatic trayless duplexing
Magnification: reduction/enlargement: 25% to 800% in 1% increments
Multiple Copies: 1 to 999
Paper Weights: 64gsm - 128gsm through bypass.
Network Print Controller
Type: embedded print/network
Processor: PIII 500MHz
RAM: 128MB (168-Pin DIMM)

PDL Support: PCL®6 / PCL®5e for Printer R1 (Adobe® PostScript® 3™ additional for Printer P1)
PostScript Fonts: 136 Type 1 and 3
PCL Fonts: 80 TrueType®
Barcode & OCR Fonts: 32 Fonts
Hard Disk: 10GB
Features: continuous print, RIP-while-print, webtool
Topology: Ethernet™, Token Ring™ (optional)
Operating System: LAN Manager, LAN server and several UNIX systems, Windows® 95/98 Windows NT 4.0, Windows 2000, Windows XP, Novell Netware 3.X Novell Netware 4.X, Linux
Speed: 10/100 Mbps Ethernet, 4/16 Mbps Token Ring
Protocols Supported: Ethernet: TCP/IP, IPX/SPX, EtherTalk, SMB; Token Ring: TCP/IP, IPX/SPX
Network Interface Connections: Ethernet: 10/100Base-T (RJ-45), 10Base-5; Token Ring: RJ-45, DB-9
Fax (Optional)
Compression: JBIG/MMR/MR
Modem Speed: 33.6Kbps
Double Sided: send/receive
Accessories
duplex ADF A1 (50 sheet capacity) • duplex ADF B1 (30 sheet capacity) • cassette feeding unit (S1) • cassette feeding unit (R1) • off-set catch tray finisher (C1) • pedestal • saddle finisher (C2) • multi-output tray (D1) • staple finisher (E1) • Expansion Board C1 • Expansion Memory (Copier) 32MB • fax board (FAXKIT) • network multi PDL printer board (P1) • network printer board (R1) • Token Ring board • scanning kit



you can
Canon

Canon Inc.

30-2, Shimomaruko 3-Chome, Ohta-Ku,
Tokyo 146-8501, Japan
www.canon.com

Europe, Africa and Middle East

Canon Europa N.V.

P.O. Box 2262, 1180 EG Amstelveen,
The Netherlands

www.canon-europa.com

English Edition 0030W851

© Canon Europa N.V., 2002 (0602)

Canon (U.K.) Limited

Woodhatch, Reigate
Surrey RH2 8BF
Telephone No: 01737 220000
Facsimile No: 01737 220022
www.canon.co.uk

™ All company and/or product names are trademarks and/or registered trademarks of their respective manufacturers in their market and/or countries. Canon reserves the right to change specifications without notice.